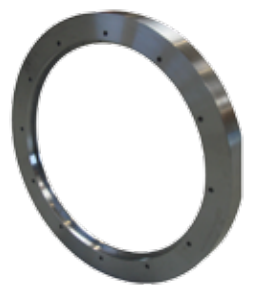
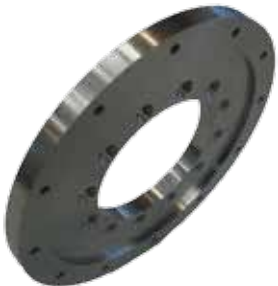


as:scan



CONTENTS

PROFILE.....	4
JUARISTI TS3-MG12.....	5
GEMINIS GHT 5 1200 X 4000.....	6
MICROCUT CHALLENGER BNC 2260.....	7
MICROCUT CHALLENGER VMC 1300.....	8
METAL CUTTING.....	9
FACILITIES.....	10
MACHINE LIST	11
REFERENCE LIST	11





AS SCAN
Fabriksvej 14
DK-6960 Hvide Sande
Tlf +45 9731 1045
Fax +45 9731 1677
info@as-scan.com
www.as-scan.com

PROFILE

AS:SCAN has since 1965 developed from being a minor ship repair machine shop to become a manufacture of our own products for the marine industry and to design and manufacture special machines for many other sectors , this production has caused for investments in our new build 2000 m2 factory with new modern machinery.

AS:SCAN is a modern machine factory with 20 highly qualified employees. We manufacture about 1500 work piece variants a year and have a factory area of 2000 m². Our production machinery includes modern CNC machines with CAD/CAM systems.

AS:SCAN has invested in new machinery to be able to deliver the best quality of products, our machine list is equipped with machines that can produce small and very large components. We can deliver prototypes and large series and we can handle all kind of material steel, aluminum, plastic etc.

AS:SCAN manufacture everything from prototypes to advanced special products. We machine steel work pieces up to 16 tons and our specialty is spare parts for engine components and industrial machines.

AS:SCAN in addition to complete machining we also offer construction, design, assembly and delivery of finished units, this includes own production and design of electronic equipment.

AS:SCAN is in front with developing hydraulic systems for many different projects within the marine and industrial field, with our own test bench large stock of hydraulic components.

AS:SCAN have own construction office where our mechanical engineer can design new products and we draw in Autodesk Inventor 3D cad.
We can help with your good ideas.

AS:SCAN we can help you with your new ideas.

JUARISTI TS3-MG12



MAIN FEATURES

Spindle diameter	130 mm
Rotation speed	3000 min-1
Spindle drive	37 kW
Vertical travel	Y 2500 mm
Spindle axial travel	W 800 mm
Column longitudinal travel	Z 2175 mm
Cross travel	X 5000 mm
Rotary table	B 1600 x 2500 mm
Weight on table	16000 kg

Heidenhain digital control i tnc 530 automatic universal milling head 2 automatic movements:
positioning Every:2,5° x 2,5°

GEMINIS GHT 5 1200 X 4000



MAIN FEATURES

Swing over bed	1200 mm
Swing over crossslide	680 mm
Center height	600 mm
Spindle bore	130 mm
Rotation speed	3000 min-1
Spindle drive	37 kw
Travel	z 550 mm
Weight between center	4800 kg
No of tools	8
Control	fagor

MICROCUT CHALLENGER BNC 2260



MAIN FEATURES

Swing over bed	790 mm
Swing over crossslide	310 mm
Travel	z 1650 mm
Turning length	x 300 mm
Center height	400 mm
Spindle bore	80 mm
Rotation speed	3500 min-1
Spindle drive	15 kw
Weight between center	800 kg
No of tool	6
Control	fagor

MICROCUT CHALLENGER VMC 1300



MAIN FEATURES

Vertical travel	y 710 mm
Travel	z 710 mm
Cross travel	x 1300 mm
Table	1500 x 660 mm
Max load on table	1500 kg
Rotation speed	10000 -min
Spindle drive	18,5 kw
Spindle nose	iso 40
Axes feed rate	10 m/min
No. Tools in atc	32
Control	fagor

METAL CUTTING



MAIN FEATURES

Bianco er320	automatic saw
Bianco er 320	
Pilot es 230	

FACILITIES



Production



Assembly



Hydraulic test



Stock

MACHINE LIST

Boring and milling:

Juaristi ts3-mg12

Microcut challenger vmc 1300

Lathe:

Microcut challenger bnc 2260

Geminis gmt 1200 x 4000

Tos 1m63 bt 500 x 2500

Tos dy 410 x 1100

Cutting:

Bianco er320 automatic saw

Bianco er 320

Pilot es 230

Cranes:

Demag 16 ton 42x21m

3 Pc demag 1 ton

Truck:

Nissan 4 ton

Toyota 2,5 ton

REFERENCE LIST

Mærsk

Esvagt

Geus

Vestas

Ah industries

Vst steel

Seasight steel

Velfac



az:scan

az:scan steering

az:scan winches

AS SCAN

Fabriksvej 14 • DK-6960 Hvide Sande

Tlf +45 9731 1045 • Fax +45 9731 1677

info@as-scan.com • www.as-scan.com